




Illinois Route 62 Study
Illinois Route 25 to Illinois Route 68
Cook & Kane Counties, Illinois

Community Advisory Group #6
Barrington Park District
December 9, 2025



1



Meeting Agenda

- Welcome
- CAG Introduction
- Project Overview
- Environmental Features and T&E Overview
- Alternatives Analysis
- Preferred Alternative
- Next Steps
- Open House / Q&A



2

Project Team

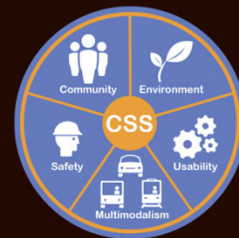
- Kimberly Murphy
 - IDOT Consultant Studies Unit Head
- Lori Brown
 - IDOT Project Manager
- Antonio Acevedo
 - Consultant – Clark Dietz
- Theresa Pelletier
 - Consultant – Epstein



3

Context Sensitive Solutions (CSS)

- A collaborative, interdisciplinary approach
- Involves stakeholders in the project development process
- Reflects project surroundings – “context”
- CSS is flexible and addresses all project aspects:
 - Safety & Mobility
 - Community & Environment



4

CSS Goals

- Understand stakeholder's key concerns
- Involve stakeholders in the decision making process
- Apply flexibility in design to address stakeholder concerns
- Achieve a **general understanding of agreement** among the stakeholders



5

Community Advisory Group (CAG)



Group Members

- Property Owners
- Residents
- Businesses
- Non-Profit Organizations
- Elected Officials
- Regulatory Agencies
- Policy Advocates
- Roadway Users / General Public

Project Role

- Provides insight to issues and concerns
- Identifies potential solutions / implementation
- Serves as communication conduit
- Attend all meetings



6

CAG Ground Rules

- Input from all participants is **valued** and **considered**.
- All participants must come to the process with an **open mind** and participate openly and honestly.
- All participants must treat each other with **respect** and **dignity**.
- All participants understand that topics will **not** be revisited once the issues have been addressed and general understanding is reached.

7

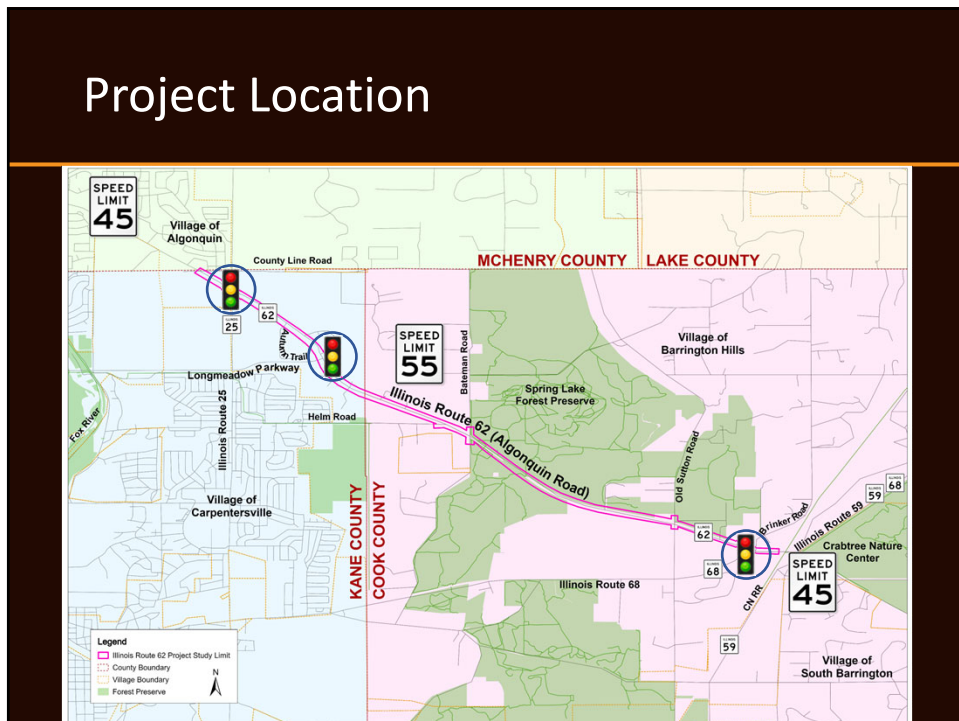
CAG Ground Rules cont'd

- The project must progress at a **reasonable pace**, based on the original project schedule.
- All decisions made by IDOT must be arrived at in a **clear** and **transparent** manner and the stakeholders should agree their input has been considered.
- Members of the media are welcome to attend the meetings as observers, not participants in the process.
- The participants and list of stakeholders are subject to change as the project warrants.

8



9



10

Purpose & Need

PURPOSE:

The purpose of this project is to improve Illinois Route 62, from Illinois Route 25 to Illinois Route 68.

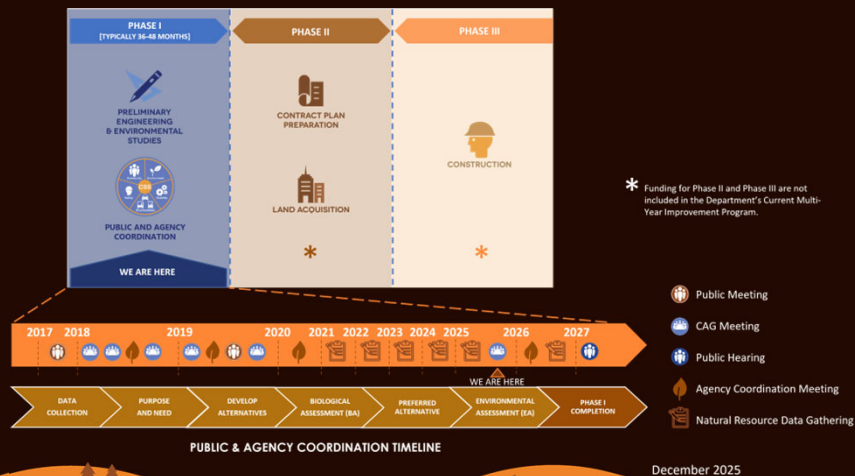
NEED:

The needs to be addressed by this project include improving safety, capacity, roadway continuity, and operations for all users.



11

Project Schedule



12

CAG Summary

- CAG 1 (2/6/18) – Intro & Existing Conditions
- CAG 2 (5/1/18) – Purpose and Need
- CAG 3 (8/21/18) – Alts to be Considered
- CAG 4 (1/17/19) - Alt Analysis & Alts to be Carried Forward
- CAG 5 (11/19/19) – T&E Species & Alternatives Refinement



13

Environmental Features and Endangered Species Overview



Illinois Department
of Transportation

14

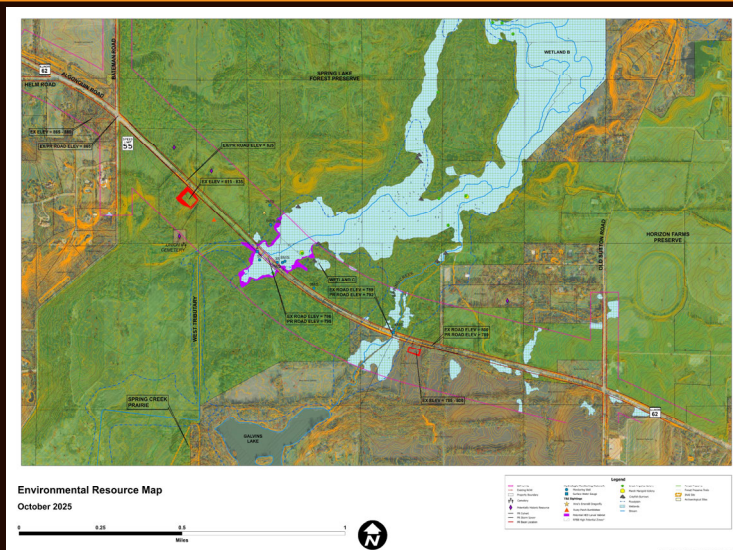
Endangered Species Overview

- IDNR and INHS have documented sightings of Rusty-Patched Bumblebee (RPBB) and Hine's Emerald Dragonfly (HED) in Spring Lake Forest Preserve
- 2021: HED Habitat Survey (INHS)
- 2021: Prescribed Burn (FPDCC)
- 2023: Wetland Delineation (Consultant)
- 2023-2025: Groundwater Study (ISGS)
- 2024-2025: Water Quality Analysis (Consultant)



15

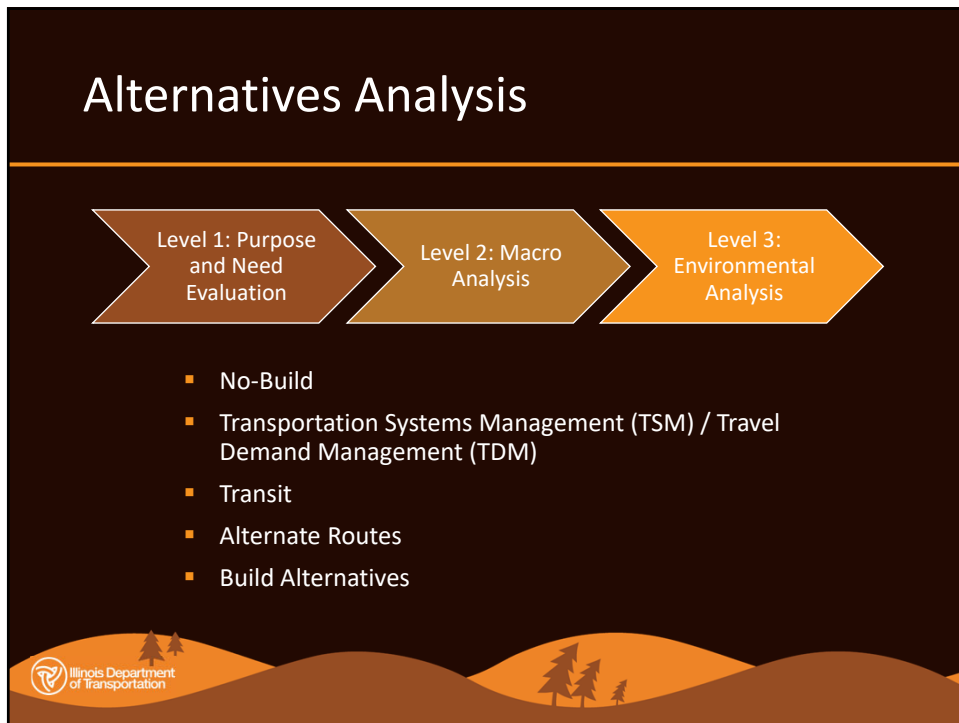
Environmental Resources



16



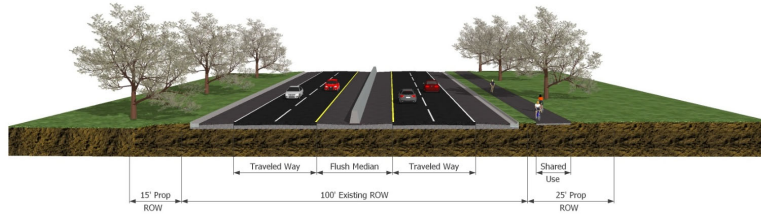
17



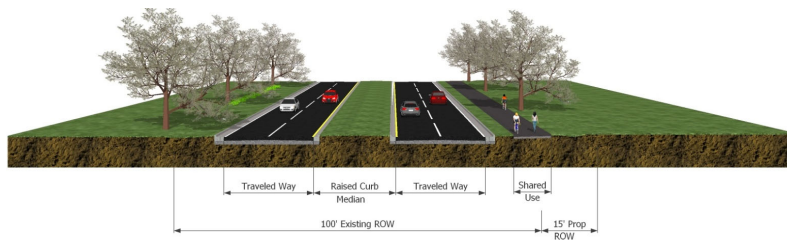
18

Alternatives to be Carried Forward

4-Lane Rural w/Paved Median and Barrier Wall



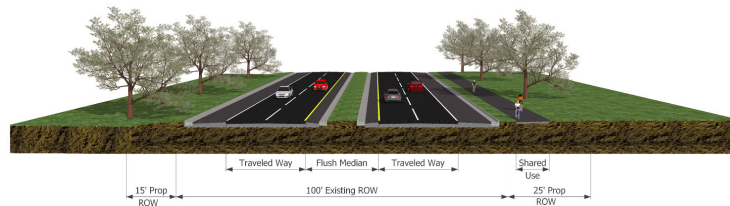
4-Lane Suburban w/Grass Median



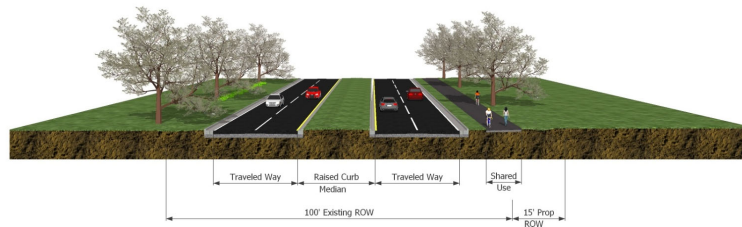
19

Alternatives Carried Forward Update

4-Lane with Inside Paved Shoulders & Narrow Median



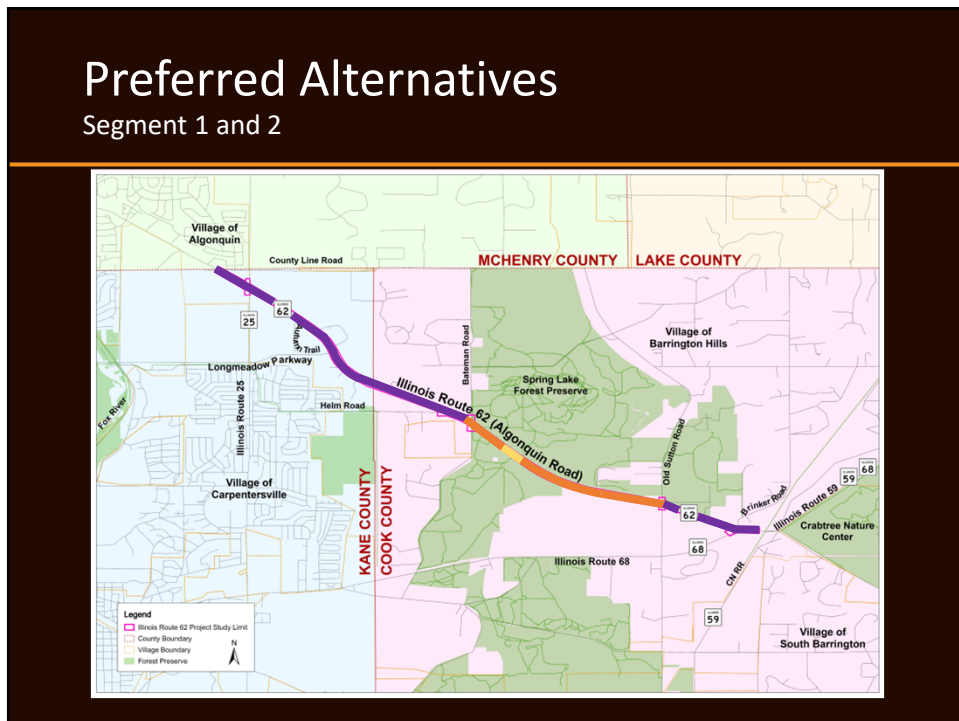
4-Lane Suburban w/Grass Median



20



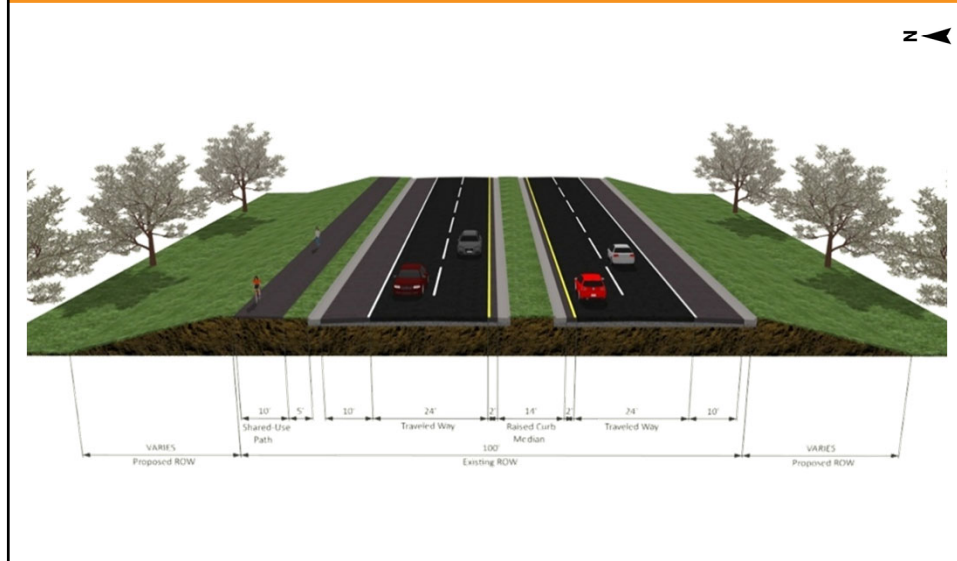
21



22

Preferred Alternative

Segment 1 – West of Bateman/East of Old Sutton | Typical Section 1



23

Preferred Alternative

Segment 2 – Bateman to Old Sutton | Typical Section 2



24

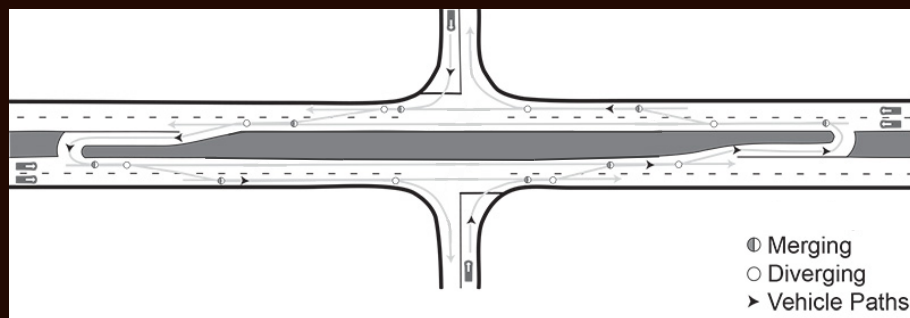
Preferred Alternative

Segment 2 – Bateman to Old Sutton | Typical Section 3



25

Right-In/Right Out Intersections



26

Potential Pedestrian Underpass



27

Next Steps

- Ongoing Coordination with USFWS and Forest Preserve
- Refinement of Preferred Roadway Alternative
- Development of Biological Assessment
- Preferred Alternative NEPA/404 Merger Meeting
- Public Coordination

28

Thank You

Thank you for your time and participation!

Materials from today's meeting will be available on the website starting tomorrow.



29

Break



30



31