



Illinois Route 62 Study

Illinois Route 25 to Illinois Route 68
Cook & Kane Counties, Illinois

Community Advisory Group #5
Barrington Park District
November 19, 2019



Meeting Agenda

- Welcome
- Public Meeting #2 Review
- CAG #4 Review & Follow Up
- Workshop
- Next Steps



Project Team

- Kimberly Murphy
 - IDOT Consultant Studies Unit Head
- Lori Brown
 - IDOT Project Manager
- Stacie Dovalovsky
 - Consultant – Clark Dietz
- Theresa Pelletier
 - Consultant – Epstein



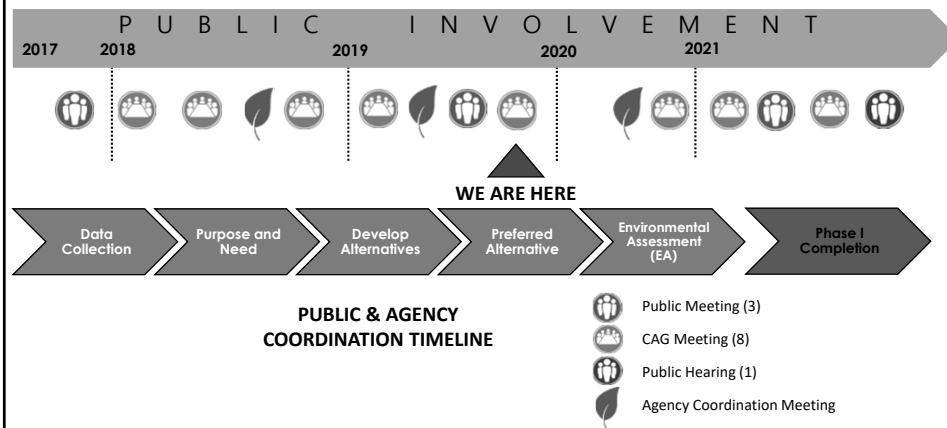
CAG Ground Rules

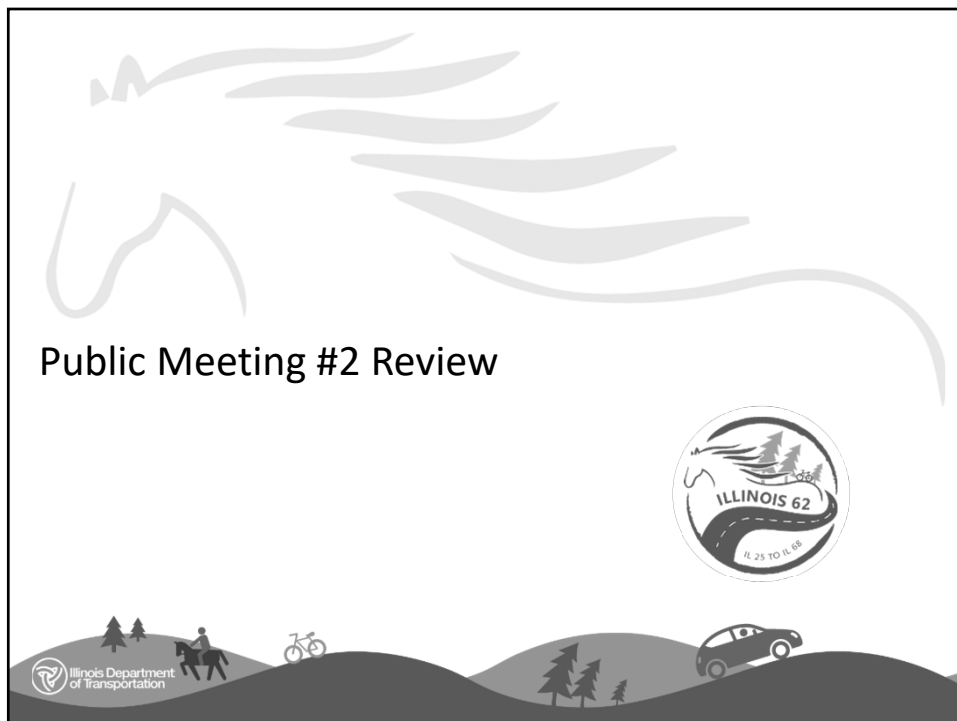
- Input from all participants is **valued** and **considered**.
- All participants must come to the process with an **open mind** and participate openly and honestly.
- All participants must treat each other with **respect** and **dignity**.
- All participants understand that topics will **not** be revisited once the issues have been addressed and general understanding is reached.

CAG Ground Rules cont'd

- The project must progress at a **reasonable pace**, based on the original project schedule.
- All decisions made by IDOT must be arrived at in a **clear** and **transparent** manner and the stakeholders should agree their input has been considered.
- Members of the media are welcome to attend the meetings as observers, not participants in the process.
- The participants and list of stakeholders are subject to change as the project warrants.

Updated Project Schedule





Public Meeting #2

- June 25, 2019
- Presented
 - Project Update
 - Purpose and Need
 - Alternatives Development & Evaluation
 - Alternatives to be Carried Forward
- 53 Attendees
- 22 Comments Received

Welcome

ILLINOIS 62
— IL 25 to IL 68 —

Public Meeting #2
June 25, 2019 • 4 pm-7 pm

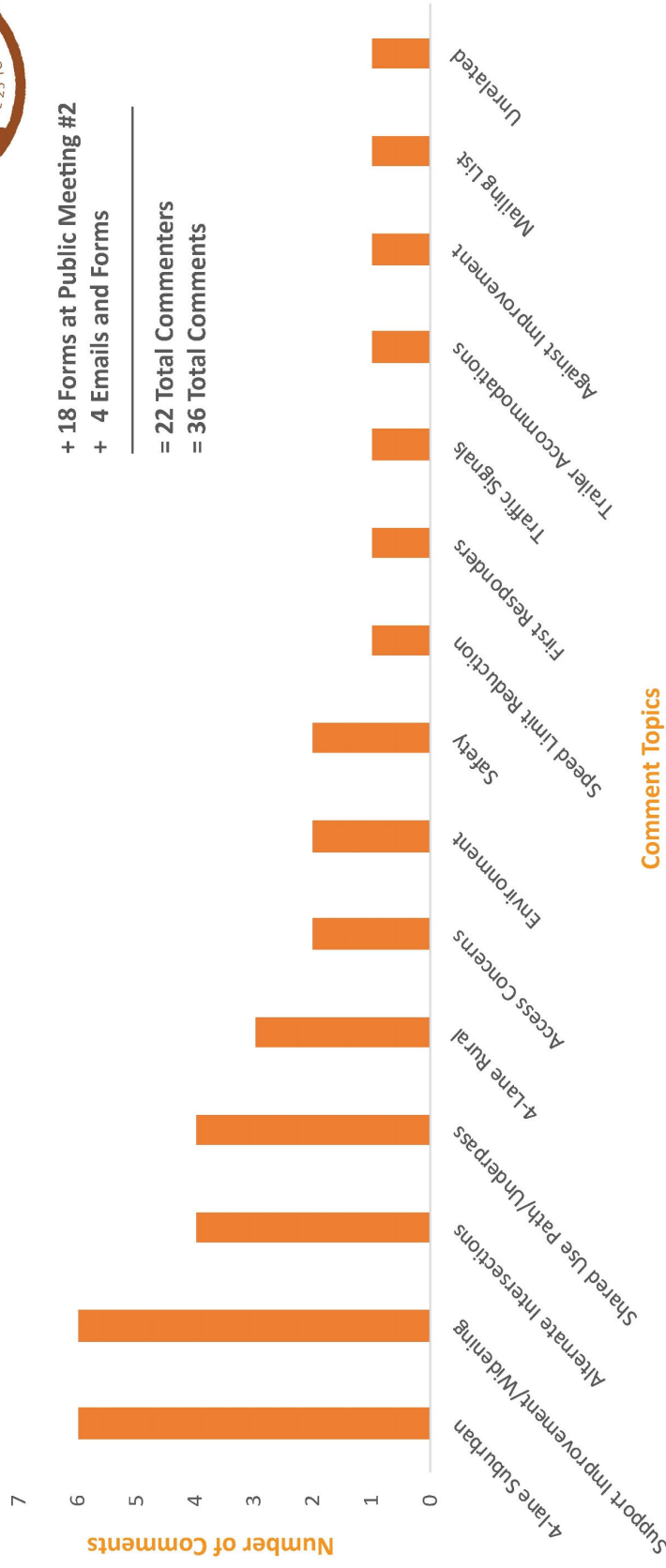
Illinois Department of Transportation

The slide includes a 'Welcome' sign graphic on the right side. The sign features the word 'Welcome' in a script font, followed by 'ILLINOIS 62' and '— IL 25 to IL 68 —'. Below this, it says 'Public Meeting #2' and 'June 25, 2019 • 4 pm-7 pm'. The sign also has a small circular logo in the top right corner. The bottom of the slide features a silhouette of a landscape with hills and trees, and the Illinois Department of Transportation logo in the bottom left corner.

PUBLIC COMMENTS RECEIVED

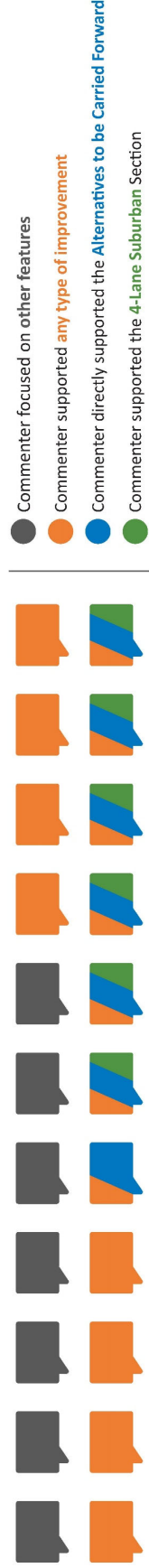


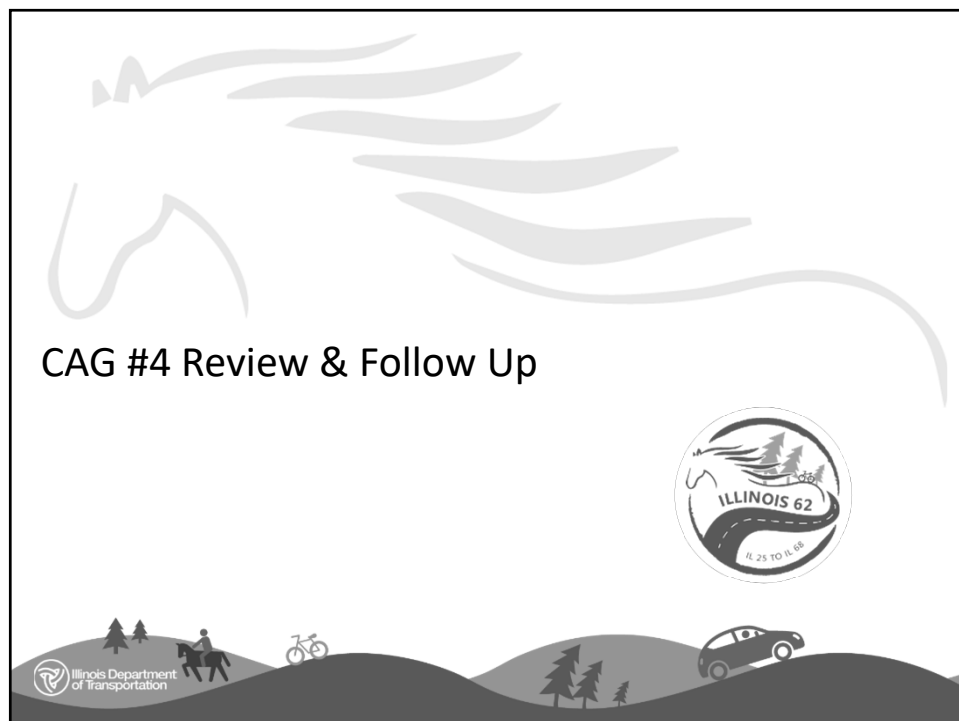
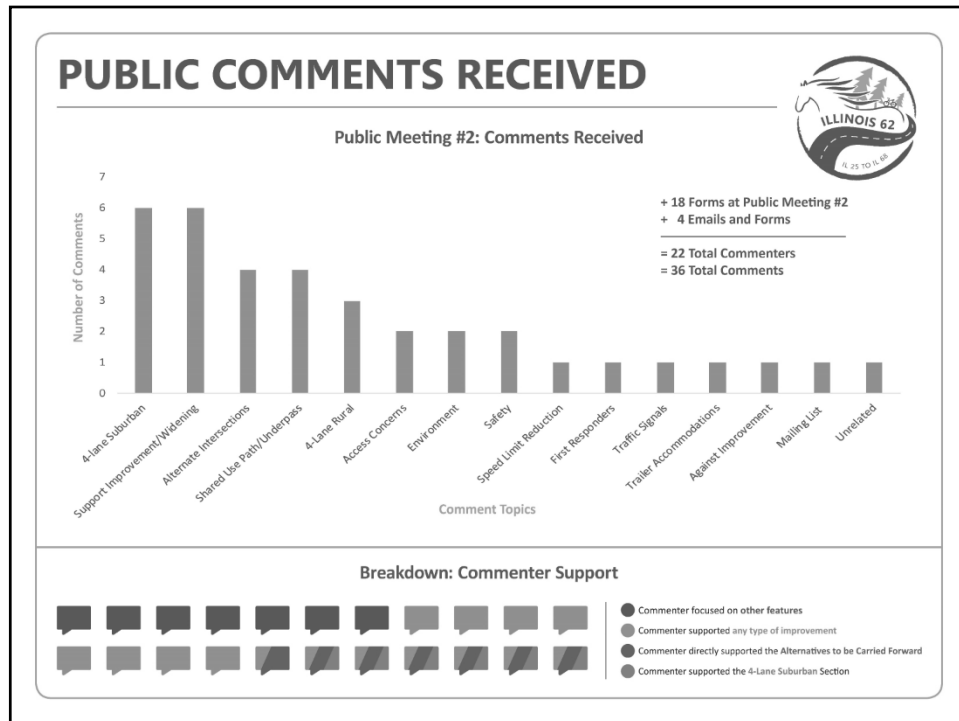
Public Meeting #2: Comments Received



+ 18 Forms at Public Meeting #2
 + 4 Emails and Forms
 = 22 Total Commenters
 = 36 Total Comments

Breakdown: Commenter Support





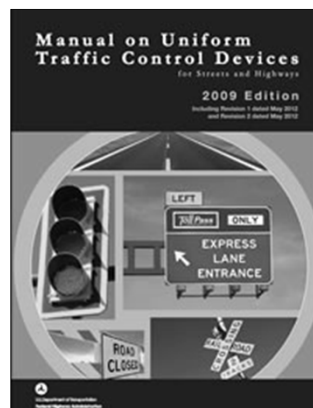
CAG #4 Review

- Updated 2050 Traffic Projections
- Updated 2016 Crash Data
- Traffic Signal Warrants
- Level 1 and Level 2 Alternative Analysis Results
- Alternatives to be Carried Forward
 - 4-Lane Rural Section with Flush Median and Curb
 - 4-Lane Suburban Section with Curb



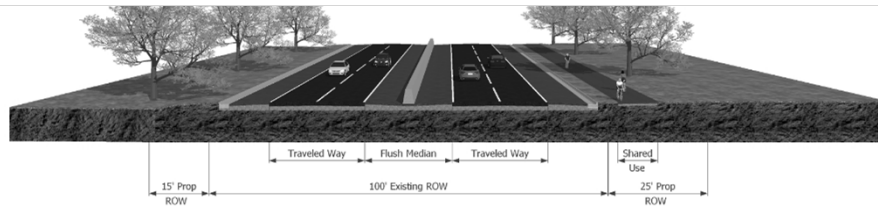
Traffic Signal Warrants

- Traffic Signal Installation is determined by *Manual on Uniform Traffic Control Devices (MUTCD)*
- **Warrant:** An engineering study of traffic conditions, pedestrian characteristics, and physical characteristics of the location to determine if a traffic signal is *justified* at a particular location
- More restrictive criteria for SRA routes
- Must meet at least 1 of 9 different Traffic Signal Warrants

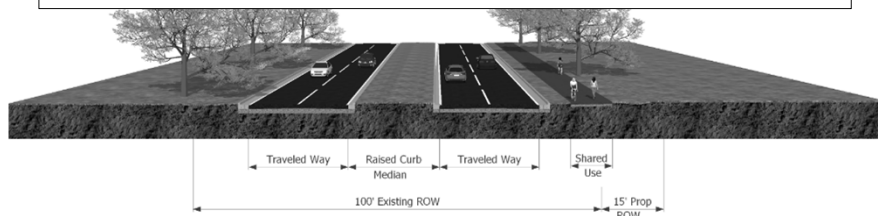


Alternatives to be Carried Forward

4-Lane Rural Section with Flush Median and Curb



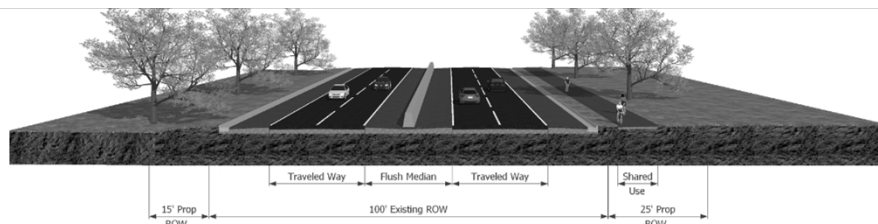
4-Lane Suburban Section with Curb



Alternatives to be Carried Forward

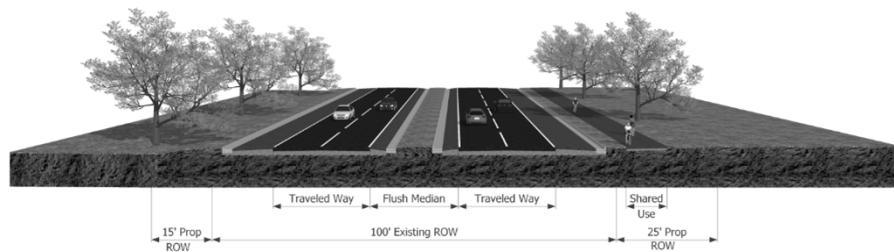
- | | |
|--|---|
| <ul style="list-style-type: none"> ▪ Benefits <ul style="list-style-type: none"> ▪ Safety ▪ Access Management ▪ Pedestrian/Bicycle/Horse Refuge ▪ Snow storage | <ul style="list-style-type: none"> ▪ Public Input <ul style="list-style-type: none"> ▪ Does not fit aesthetic ▪ Barrier for wildlife ▪ Safety ▪ Larger footprint ▪ Access – mail, driveways, etc |
|--|---|

4-Lane Rural Section Flush Median with Curb



Alternatives to be Carried Forward

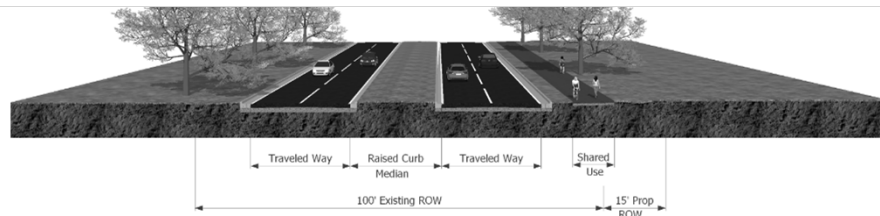
4-Lane Section with Shoulder



Alternatives to be Carried Forward

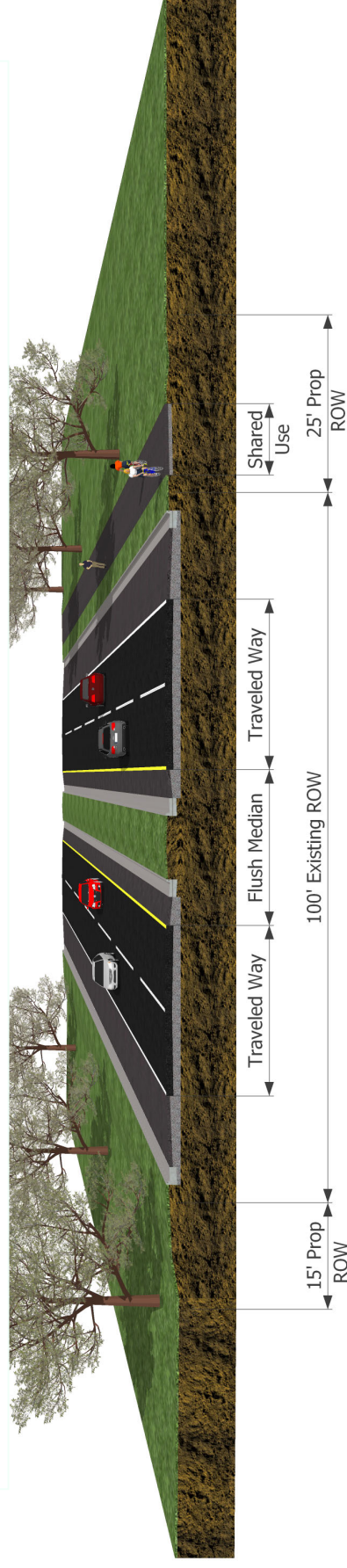
- | | |
|---|--|
| <ul style="list-style-type: none"> ▪ Benefits <ul style="list-style-type: none"> ▪ Traffic Calming Effect ▪ Safety ▪ Access Management ▪ Pedestrian/Bicycle/Horse Refuge ▪ Landscaping & Snow storage | <ul style="list-style-type: none"> ▪ Public Input <ul style="list-style-type: none"> ▪ Aligns with BH aesthetic ▪ Smaller footprint ▪ Provides for landscaping |
|---|--|

4-Lane Section without Shoulder

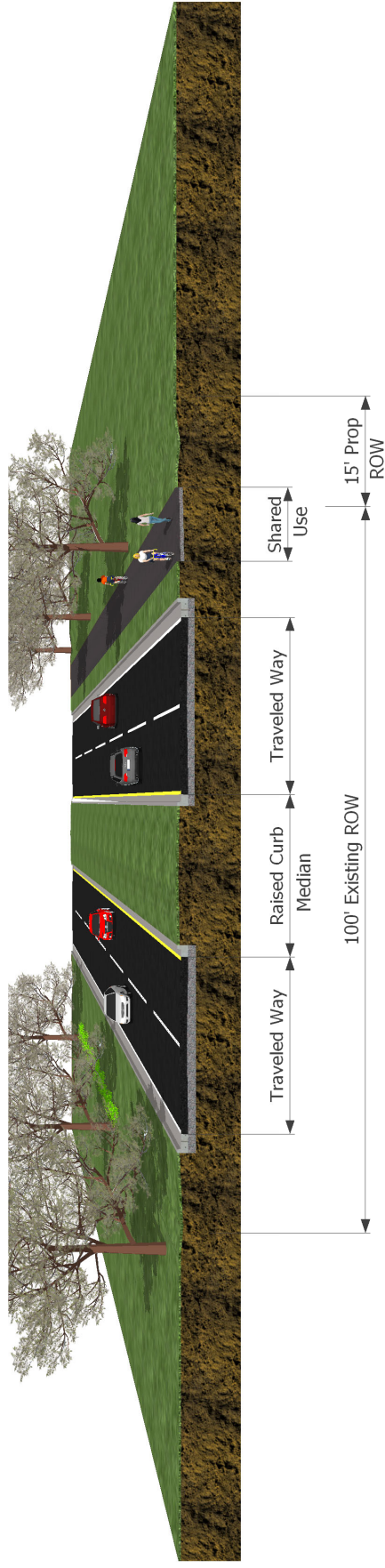


Alternatives to be Carried Forward

4-Lane Section with Shoulder



4-Lane Section without Shoulder

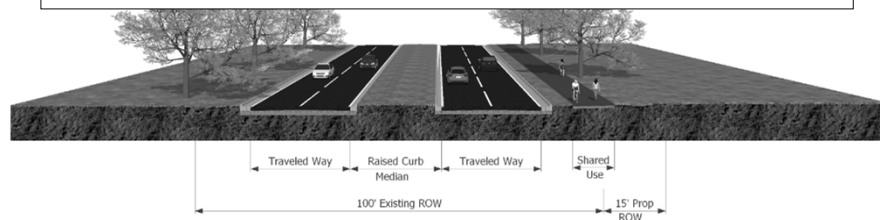


Alternatives to be Carried Forward

4-Lane Section with Shoulder



4-Lane Section without Shoulder



Project Update



Environmental Surveys Received

- Eastern Prairie Fringed Orchid
- Botanical Survey
- Hine's Emerald Dragonfly
- Blanding's Turtle
- Freshwater Mussels
- Avian Survey
- Rusty-Patched Bumble Bee



Environmental Survey Results & Next Steps

- Hine's Emerald Dragonfly
 - Sighting: 6/14/2019
 - Previously seen in 2016
- Rusty-Patched Bumble Bee
 - Sighting: 7/16/2019
- Coordination with USFWS



Additional Stakeholder Coordination

- June 6, 2019
 - Village of Barrington Hills
 - First Responders
- October 17, 2019
 - Forest Preserve District of Cook County

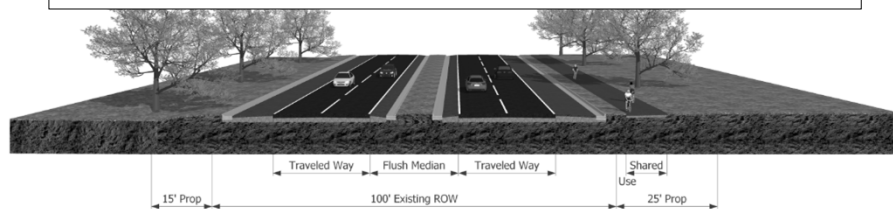


Workshop

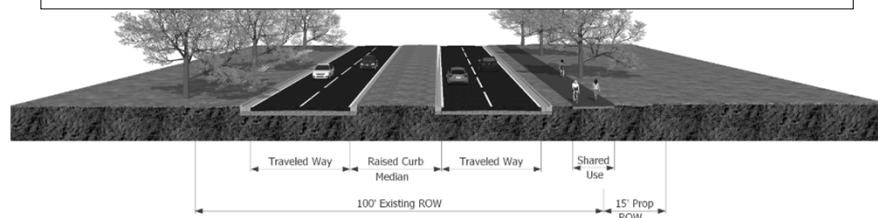


Alternatives to be Carried Forward

4-Lane Section with Shoulder

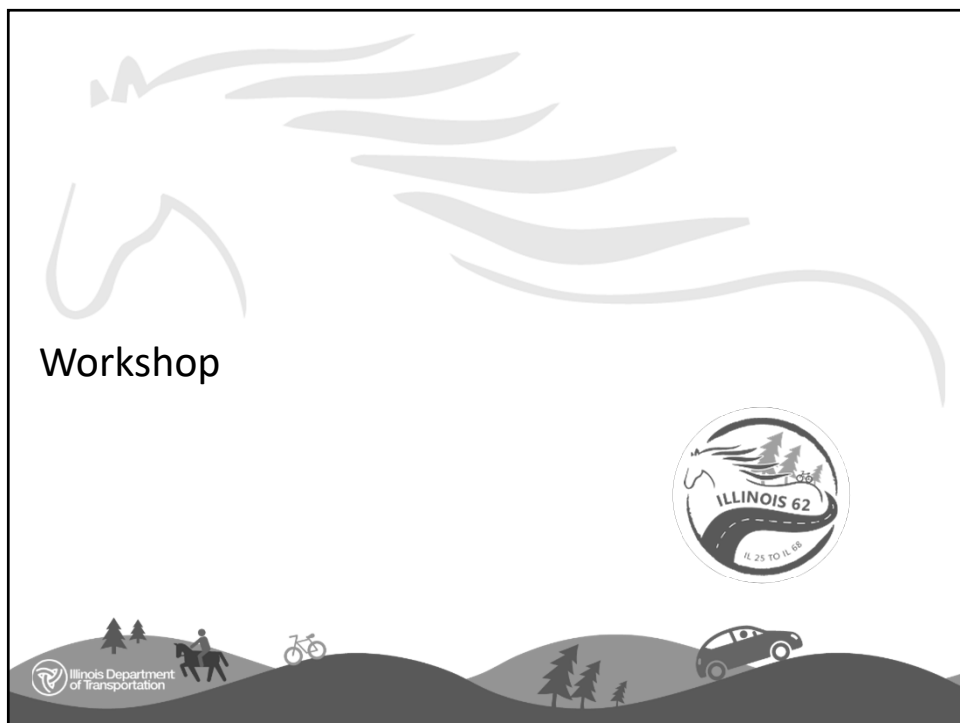


4-Lane Section without Shoulder



Workshop Stations

- Exercise #1: Construction Impacts
 - Construction Limits vs. ROW Acquisition
 - Impacts to
 - Private Property (Right-of-Way)
 - Forest Preserve
 - Wetlands
- Exercise #2: Access Management
 - R-Cut Intersections
 - Bumpout Spacing
 - ¼ Mile – without Shoulder Spacing
 - 1 Mile – with Shoulder Spacing
 - Sight Distance
 - Access Considerations

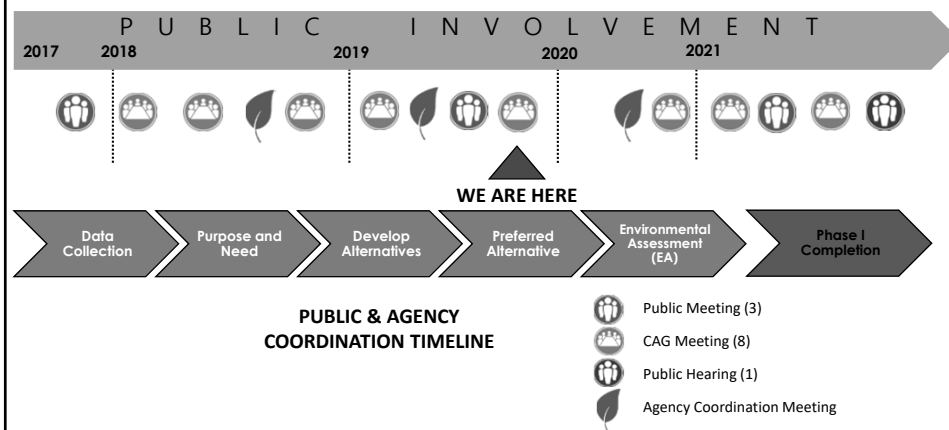


Next Steps

- Continued Environmental Coordination
- Next CAG – Late 2020 or Early 2021
- Geometric Refinements
 - Avoid/Minimize Impacts
 - Alternative Intersections
 - Median Openings



Project Schedule & Public Involvement



Thank You

Thank you for your time and participation!

Materials from today's meeting will be available on the website starting tomorrow.

Idot.illinois.gov/projects/IL62Study

