

# Illinois Route 62 Study

Illinois Route 25 to Illinois Route 68  
Cook & Kane Counties, Illinois

## Community Advisory Group

Barrington Park District

May 1, 2018



## Meeting Agenda

- Welcome
- CAG #1 Overview
- Traffic Discussion
- Longmeadow Parkway Schedule
- Problem Statement
- Purpose and Need
- Break
- Introduce Alternatives Development
- Next Steps



## Project Team

- Kimberly Murphy
  - IDOT Consultant Studies Unit Head
- Lori Brown
  - IDOT Project Manager
- Stacie Dovalovsky
  - Consultant –Clark Dietz
- Theresa Pelletier
  - Consultant - Epstein



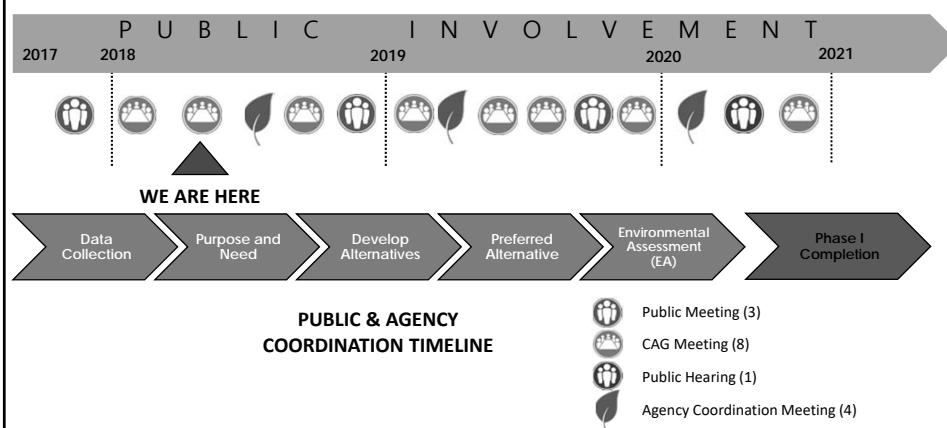
## CAG Ground Rules

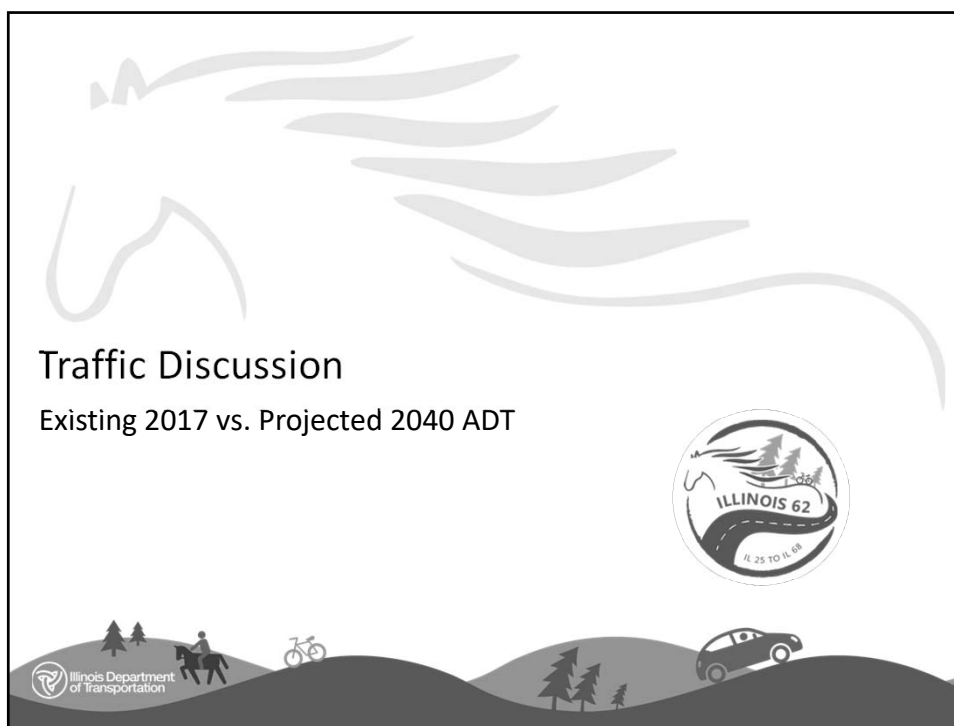
- Input from all participants is **valued** and **considered**.
- All participants must come to the process with an **open mind** and participate openly and honestly.
- All participants must treat each other with **respect** and **dignity**.
- All participants understand that topics will **not** be revisited once the issues have been addressed and general understanding is reached.

## CAG Ground Rules cont'd

- The project must progress at a **reasonable pace**, based on the original project schedule.
- All decisions made by IDOT must be arrived at in a **clear** and **transparent** manner and the stakeholders should agree their input has been considered.
- Members of the media are welcome to attend the meetings as observers, not participants in the process.
- The participants and list of stakeholders are subject to change as the project warrants.

## Project Schedule & Public Involvement

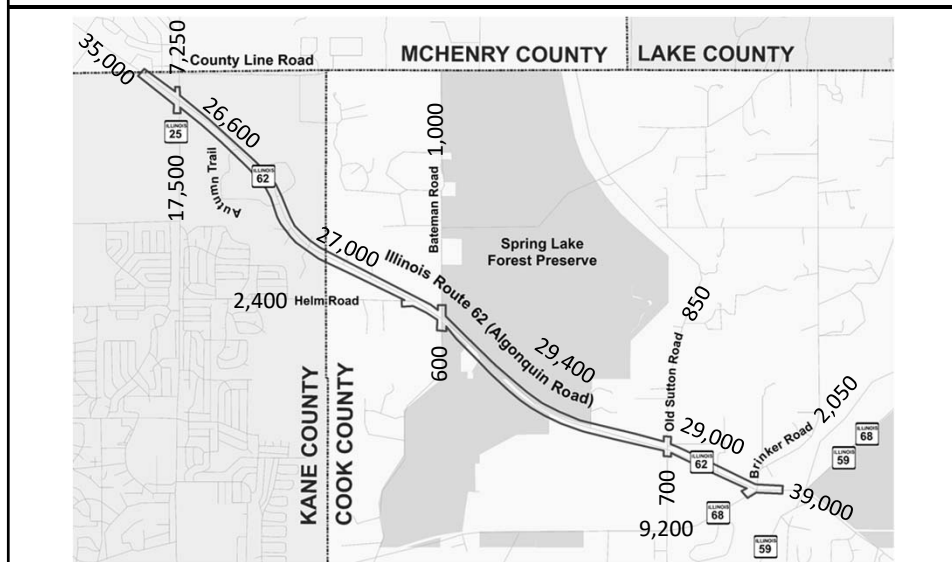




## Existing Traffic

- First step – collect, compile, and analyze
- Major intersections
- 24-hour video
- December 6, 2016 & August 2, 2017
- Average Daily Traffic (ADT)
- Peak Hour Volume

## 2017 Average Daily Traffic (ADT)

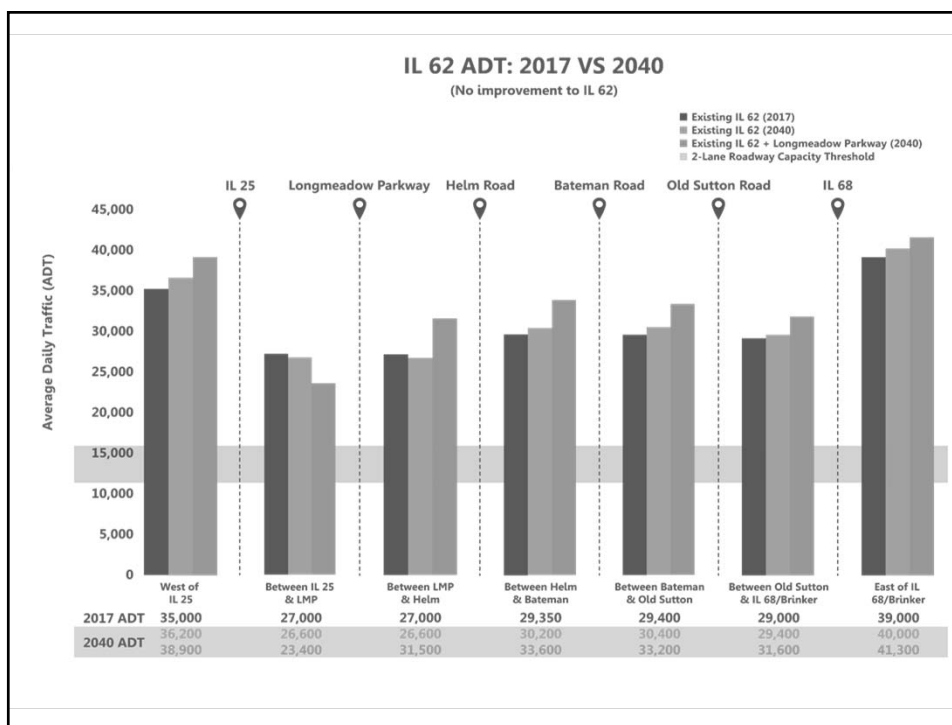


## Peak Hour Traffic Volumes

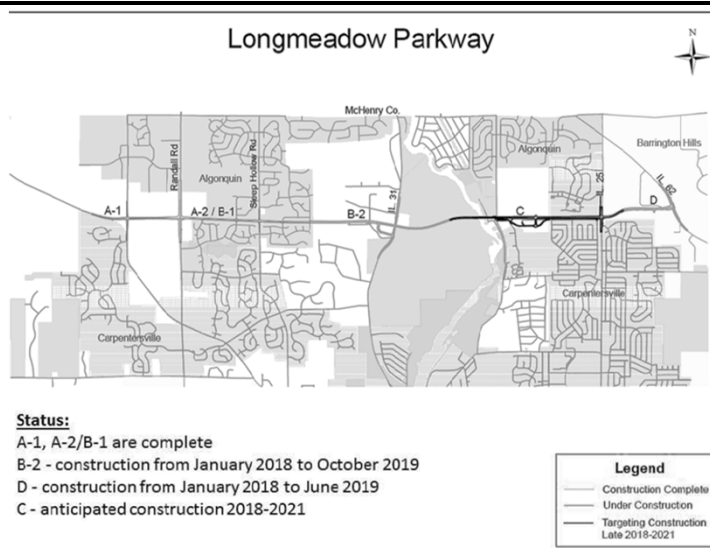
- Peak Hour Volumes (PHV)
  - Hour of highest traffic volume
  - Typically during morning and evening commute hours
  - Existing PHV determined from traffic counts
  - Projected PHV based on CMAP projections
- AM peak hour = 7:00-8:00 am
- PM peak hour = 5:00-6:00 pm (except at Old Sutton Road where it is 4:00pm-5:00pm)

## Projecting Traffic

- 2040 ADT projections come from Chicago Metropolitan Agency for Planning (CMAP)
- 2040 Projections based on the CMAP Travel Demand Analysis
  - Regional travel model
  - CMAP 2040 socioeconomic projections
  - GO TO 2040 Comprehensive Plan for Northeastern Illinois
- 2050 Traffic Projections will be available Fall/Winter 2018



## Longmeadow Parkway - Schedule



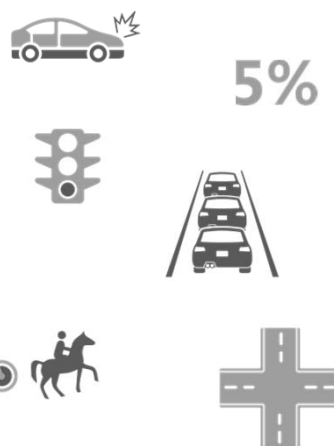
## Community Advisory Group #1

### Workshop Review & Problem Statement



## Issues Identified for Technical Review

- High number of crashes
- High percentage of rear end crashes
- Projected increase in traffic volumes
- Traffic operations for 2017 and 2040
- Traffic signal warrants
- Bicycle, pedestrian, equestrian access
- Roadway Continuity



## Transportation Workshop Review

- |   |   |
|---|---|
| <ul style="list-style-type: none"> <li>▪ Safe intersections</li> <li>▪ Cross streets at Bateman</li> <li>▪ Side street intersections</li> <li>▪ Side street access</li> <li>▪ Emergency and first response</li> <li>▪ Road width unsafe</li> <li>▪ Design roadway to lower speed limit</li> <li>▪ Congestion</li> <li>▪ Multi-modal and high ADT</li> <li>▪ Congestion at peak times</li> <li>▪ Merge zones: center lane, slip roads</li> <li>▪ Wait time / disruption: Bateman, Old Sutton, Heintz</li> <li>▪ Banning of 20 District school buses</li> <li>▪ Maintain rural character</li> </ul> | <ul style="list-style-type: none"> <li>▪ Environment and natural areas impact</li> <li>▪ Highway design respects character and environment</li> <li>▪ No multi-modal access</li> <li>▪ Equestrian crossing, access to trails</li> <li>▪ Grade separations for pedestrian crossings</li> <li>▪ Road unfriendly to non-vehicular users (bikes and animals)</li> <li>▪ Too much noise</li> <li>▪ Property impacts – negative?</li> <li>▪ Access to natural areas – public parking</li> <li>▪ Unknown impact of Longmeadow Parkway</li> </ul> |
|---|---|





## Workshop Review: Improve Safety

### Technical Analysis

5%



### Stakeholder Input



## Workshop Review: Improve Operations

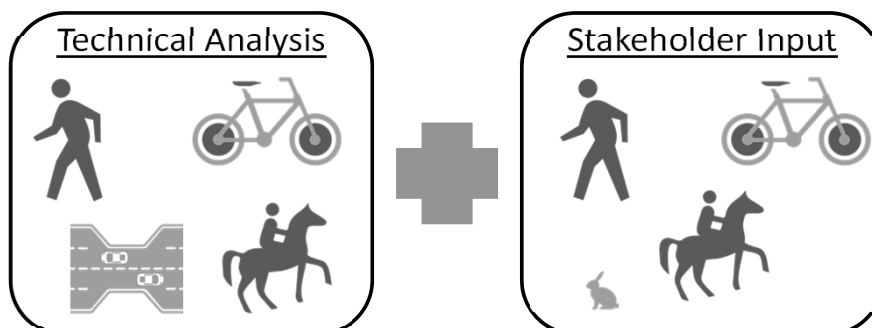
### Technical Analysis



### Stakeholder Input



## Workshop Review: Multi-Use Connectivity & Roadway Continuity

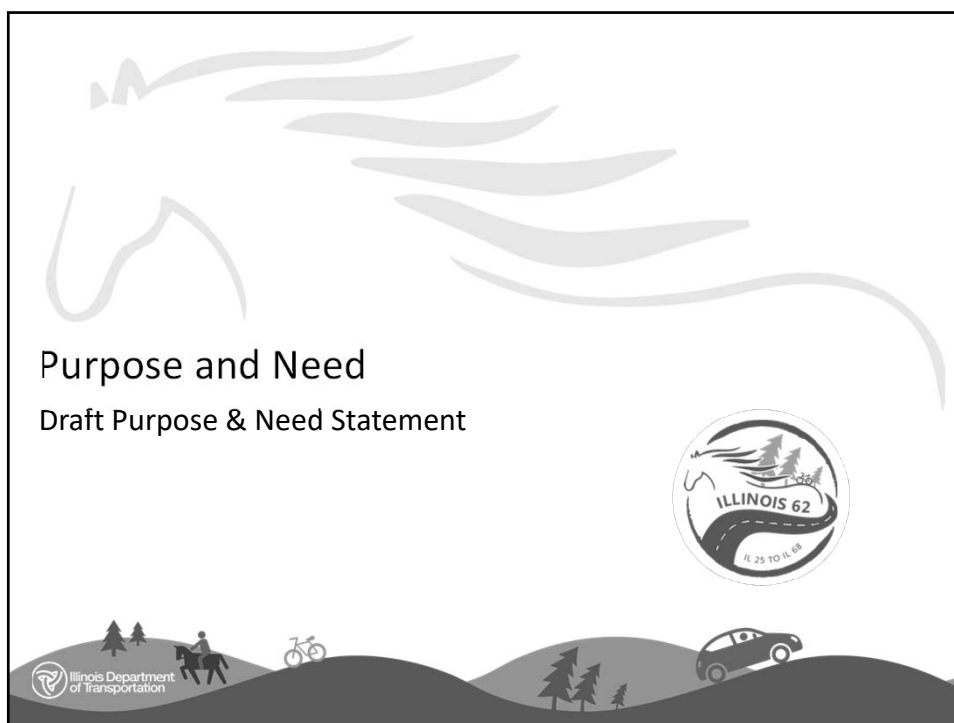


## Problem Statement

The high volume of vehicles in combination with multiple access points on Illinois Route 62 obstructs access and vehicle mobility, while increasing the potential for crashes within the project area.

The improvement should consider the natural areas and community character while ultimately working to improve overall safety, reduce congestion, and increase multi-modal access along and across Illinois Route 62.





## Purpose and Need Statement

- Required as part of an Environmental Assessment
- Consists of
  - Purpose (why is the project proposed)
  - Need (why is the project needed)
- Serves as foundation for the identification & evaluation of alternatives
  - How does the proposed solution address the purpose of the project?
  - How does the proposed solution address the need for improvement?



## Proposed Draft Purpose & Need

### PURPOSE:

The purpose of this project is to improve Illinois Route 62, from Illinois Route 25 to Illinois Route 68.

### NEED:

The needs to be addressed by this project include improving safety, capacity, roadway continuity, and operations for all users.



## Alternatives Development Introduction

Alternatives to be Considered, Alternatives Development



## Alternatives to be Considered

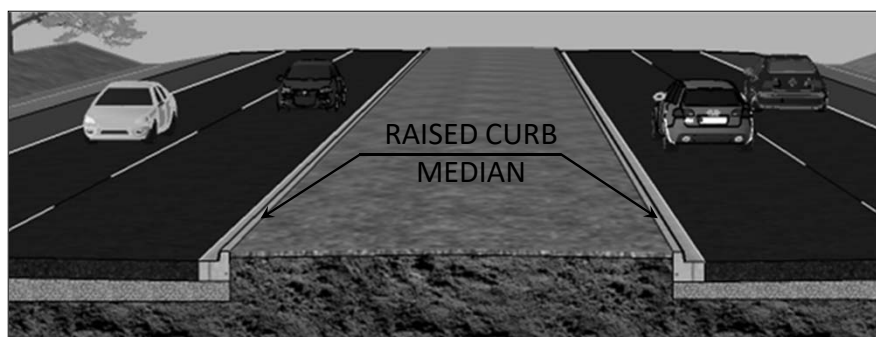
As part of the Environmental Assessment we will evaluate:

- No Build Alternative – regular maintenance of existing facilities only
- Alternative Routes
- Transit Alternatives
- Transportation System Management Alternative
- Multiple Build Alternatives



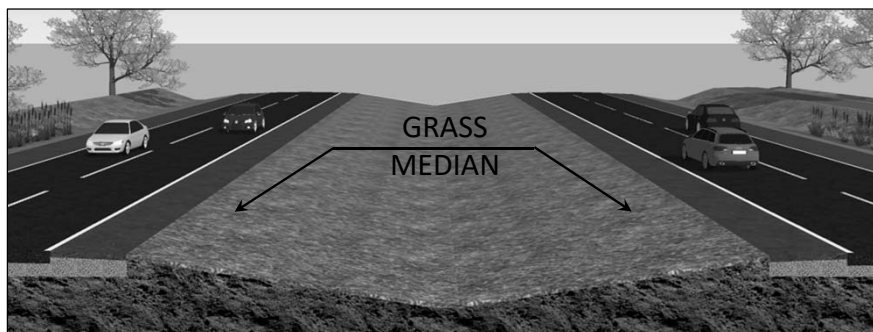
## Need – Improve Safety

- Raised Curb Median



## Need – Improve Safety Cont'd

- Grass Median

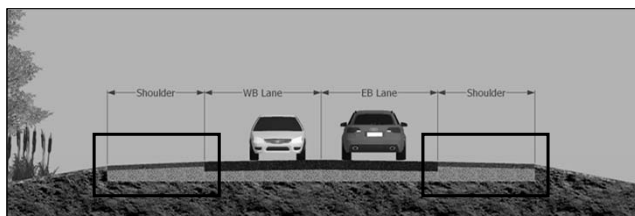


## Need – Improve Safety cont'd

- Shoulder improvements

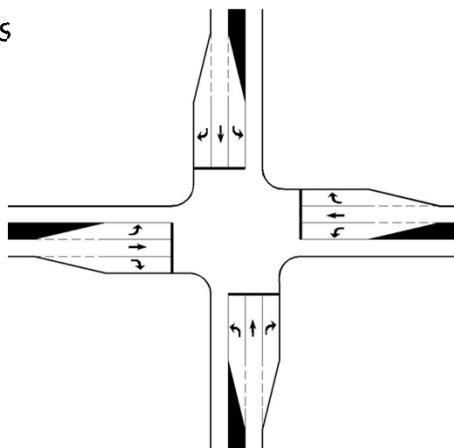
- Paved
- Widened

- Traffic signals



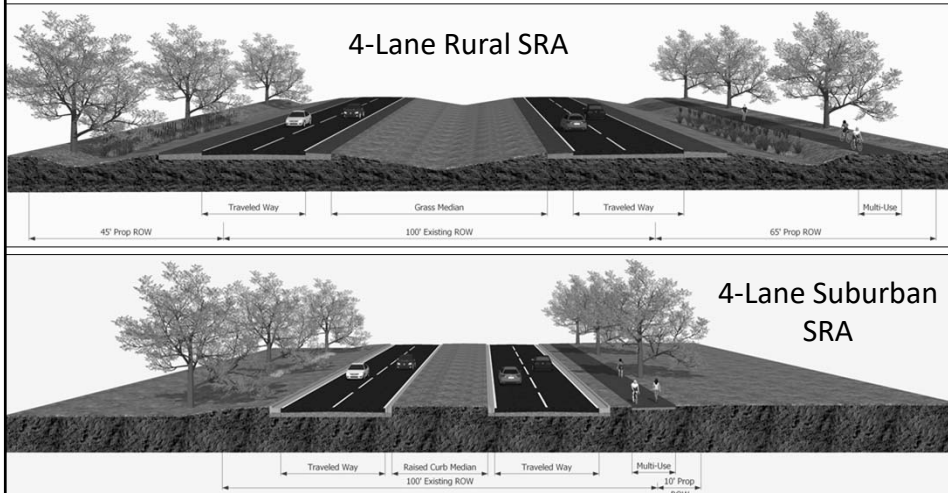
## Need – Improve Safety cont'd

- Additional through lanes
- Channelization
  - Right/Left Turn Lanes at Intersections



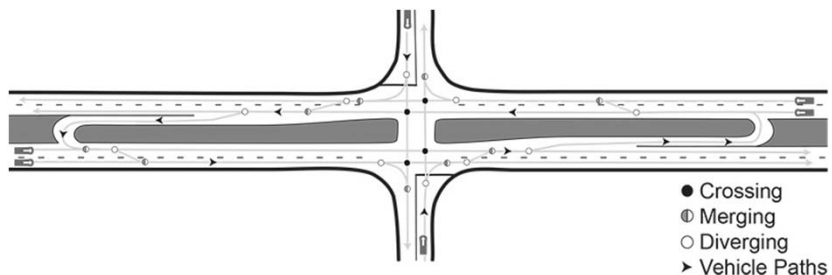
## Need – Improve Capacity

- Additional through lanes



## Need – Improve Capacity Cont'd

- Channelization – Turn Lanes
- Managing access points



## Need – Improve Roadway Continuity

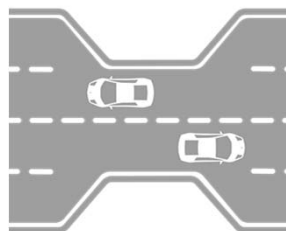
- Coordinate with existing improvements at IL 25 and IL 68
- Curbed vs. shoulder section





## Need – Improve Roadway Continuity cont'd

- Managing driver expectations
  - Consistent signage
  - Consistent Speed
  - Consistent Roadway Section



## Need – Improve Multi-Modal Connections

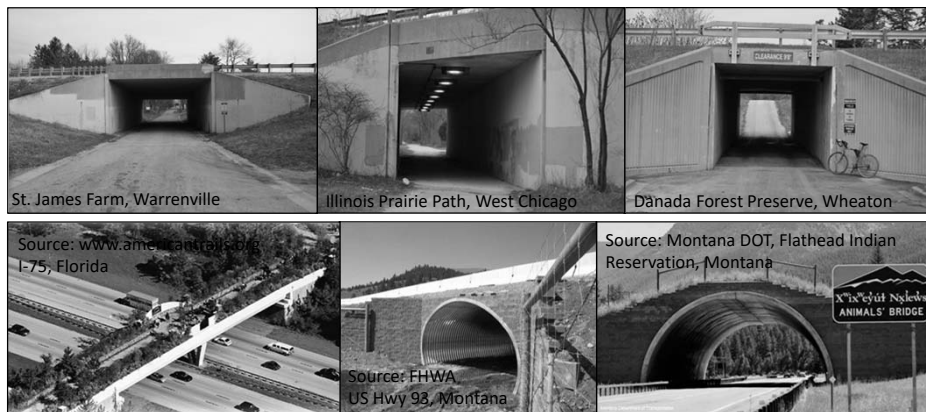
- Multi-use path along IL 62
- Improved connectivity across IL 62



## Need – Improve Multi-Modal Connections cont'd

### ■ Multi-Use/Animal Crossing

- Overpass
- Underpass

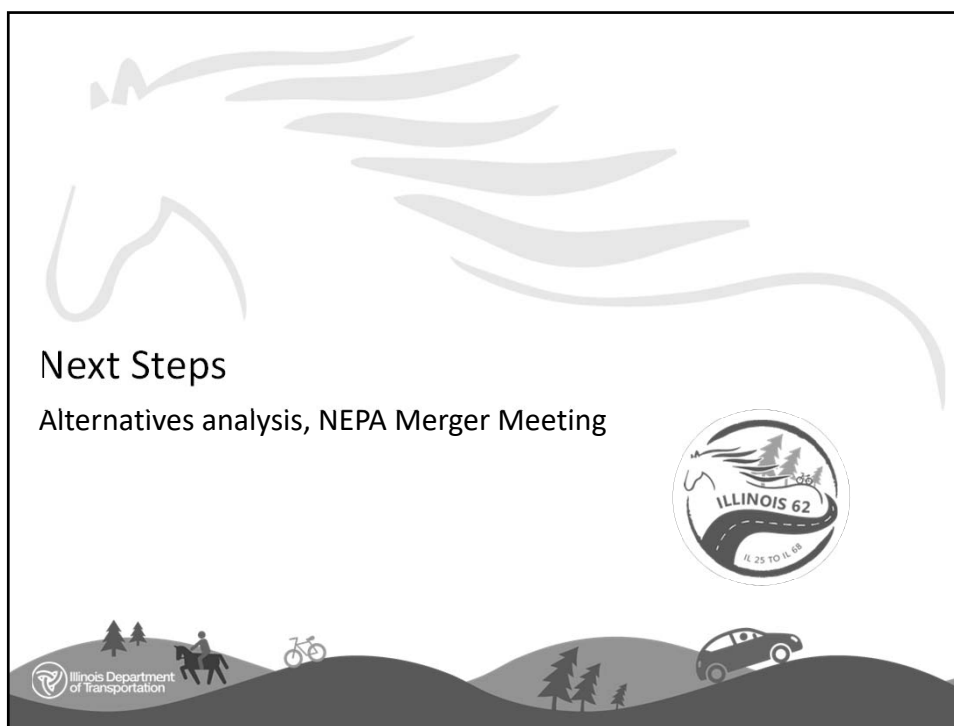


## Public Input on Potential Solutions

Potential Solutions we heard at the Public Meeting & CAG #1:

- Traffic Signals
  - Bateman Road
  - Old Sutton Road
- Horizontal and Vertical Improvements
- Animal Crossing – Land Bridge
- Roundabouts



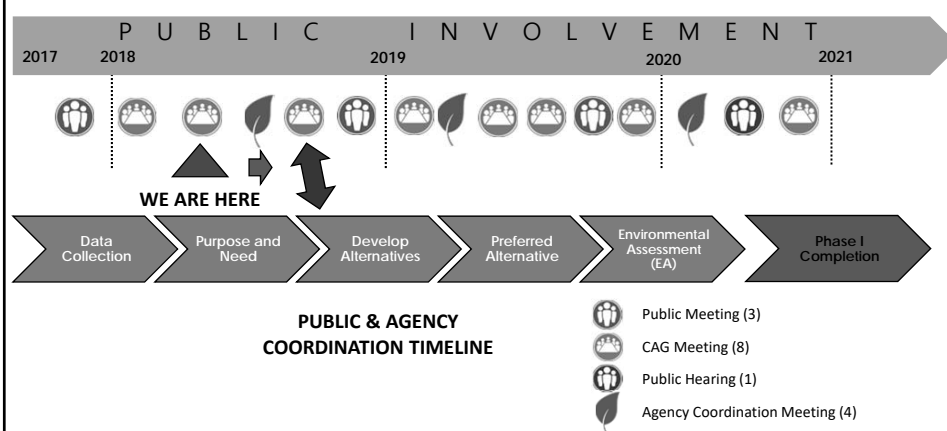


## Next Steps

- Finalizing Purpose and Need
  - Present to & get concurrence from FHWA
- Developing & Evaluating Alternatives
- CAG #3 – Summer/Fall 2018
  - Review range of potential alternatives
  - Discuss screening & evaluation process
- Public Meeting #2 – Fall/Winter 2018
  - Present the Alternatives to be Carried Forward



## Project Schedule & Public Involvement



## Thank You

Thank you for your time and participation!

Materials from today's meeting will be available on the website starting tomorrow.

[Idot.illinois.gov/projects/IL62Study](http://Idot.illinois.gov/projects/IL62Study)

