

FOR INFORMATIONAL
PURPOSES ONLY

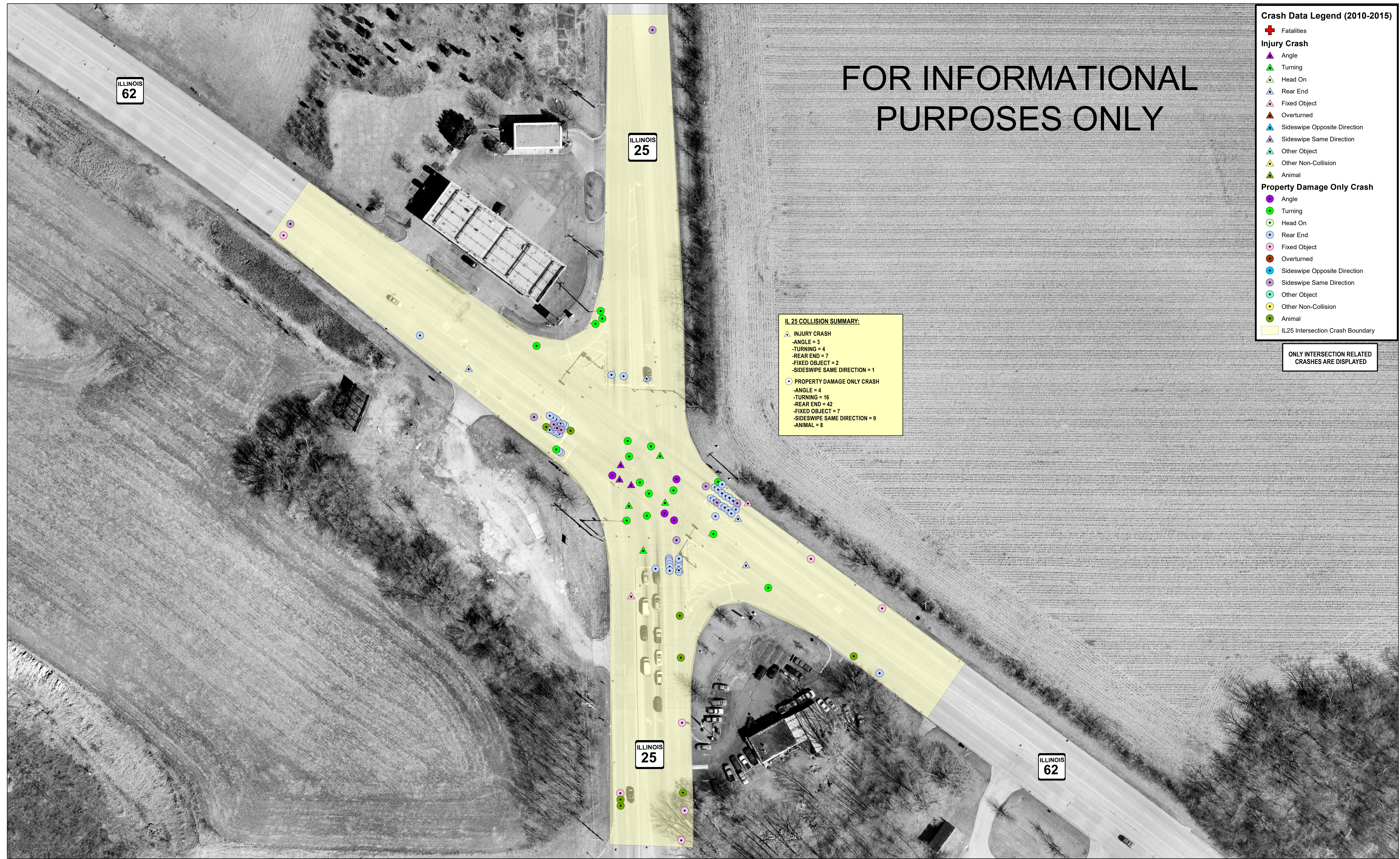
Crash Data Legend (2010-2015)

- + Fatalities
- Injury Crash**
- ▲ Angle
- ▲ Turning
- ▲ Head On
- ▲ Rear End
- ▲ Fixed Object
- ▲ Overturned
- ▲ Sideswipe Opposite Direction
- ▲ Sideswipe Same Direction
- ▲ Other Object
- ▲ Other Non-Collision
- ▲ Animal
- Property Damage Only Crash**
- Angle
- Turning
- Head On
- Rear End
- Fixed Object
- Overturned
- Sideswipe Opposite Direction
- Sideswipe Same Direction
- Other Object
- Other Non-Collision
- Animal
- IL25 Intersection Crash Boundary

ONLY INTERSECTION RELATED
CRASHES ARE DISPLAYED

IL 25 COLLISION SUMMARY:

- ▲ INJURY CRASH
 - ANGLE = 3
 - TURNING = 4
 - REAR END = 7
 - FIXED OBJECT = 2
 - SIDESWIPE SAME DIRECTION = 1
- PROPERTY DAMAGE ONLY CRASH
 - ANGLE = 4
 - TURNING = 16
 - REAR END = 42
 - FIXED OBJECT = 7
 - SIDESWIPE SAME DIRECTION = 9
 - ANIMAL = 8



Illinois Route 25 Intersection Crash Data (2010-2015)

November 9, 2017

0 125 250 Feet

Feet