



STAKEHOLDER INVOLVEMENT PLAN (SIP)

A Stakeholder Involvement Plan (SIP) documents the methods by which a stakeholder can get involved in the study process, and is vital to the success of the CSS process and the project. The SIP is a framework plan for the execution of CSS that is both comprehensive and flexible based on project needs, and is subject to revision throughout the project. The SIP includes a variety of potential input methods for stakeholder involvement, including brochures, agency/organization meetings, public meetings, a public hearing, and meetings with individuals as appropriate. Copies of the draft SIP are available today at the public meeting for review and comment, on the project website, or can be requested from the Department.

What is a Stakeholder?
A stakeholder is anyone potentially affected by, concerned with, or interested in the outcome of the proposed improvements being contemplated. Please refer to the SIP for more information.

COMMUNITY ADVISORY GROUP (CAG)

After tonight’s public meeting, a Community Advisory Group (CAG) will be formed. The CAG is a volunteer group of community representatives that meet with IDOT at key milestones to review the project and provide input. The CAG is a key component of the CSS process. Potential CAG members include business owners, local residents, elected and community officials, neighborhood representatives, and community leaders. The project team will review the applications to join the CAG to ensure that the group represents a broad spectrum of community interests. More information on the structure of the CAG and the responsibilities of the members is presented in the Stakeholder Involvement Plan (SIP).



COMMENTS OR QUESTIONS

Please visit the project website at idot.illinois.gov/projects/IL62study for materials shown at the public meeting. Questions and comments may be submitted during this public meeting using the comment form provided, mailed to IDOT at the address indicated below, sent to the project email address IL62Study@ClarkDietz.com, or sent through the project website. Comments received by December 11, 2017 will become part of official public meeting record.

Illinois Department of Transportation, District 1
Bureau of Programming
201 West Center Court
Schaumburg, Illinois 60196-1096
Attn: Lori Brown, Project Manager
(847) 705-4477



Public Meeting #1

November 9, 2017
4:00 p.m. to 7:00 p.m.

Barrington Park District
235 Lions Drive
Barrington, IL

Welcomes

The Illinois Department of Transportation (IDOT) welcomes you to the first Public Meeting for the Illinois Route 62 Phase I Study. The public meeting is an open house format. We invite you to listen to the presentation across the hall, examine the exhibits on display, and take this opportunity to talk with the project team in attendance.

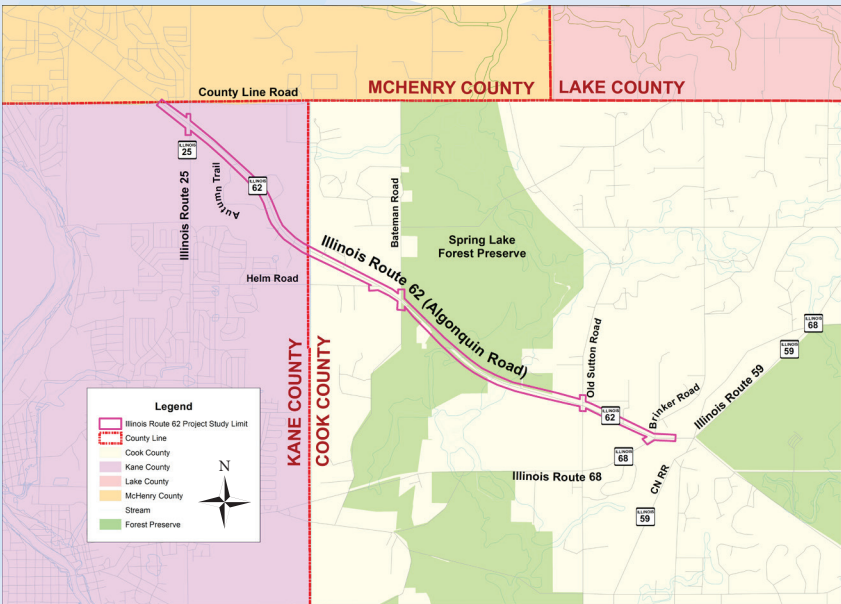
Once you have reviewed the materials, we encourage you to provide feedback on the project.

PURPOSE OF THE MEETING

- Introduce the project
- Learn about the planning process, project schedule, and public involvement opportunities
- Obtain public input on the transportation issues within the study area

PROJECT STUDY AREA

The project is located in the Village of Barrington Hills in both Kane and Cook Counties. The limits are Illinois Route 25 (Elgin Road) on the west to Illinois Route 68 (W. Dundee Road) on the east. Other municipalities potentially affected by this improvement include the Villages of Algonquin, Carpentersville, Barrington, and South Barrington.



PROJECT BACKGROUND

The Illinois Department of Transportation (IDOT) is currently engaged in preliminary engineering and environmental studies (Phase I) to improve Illinois Route 62 (Algonquin Road) from Illinois Route 25 to Illinois Route 68. The project is located in the Village of Barrington Hills in Cook and Kane Counties. The land use within the project area is primarily forest preserve and residential.

The proposed project is anticipated to use geometric modifications through reconstruction to address safety concerns and accommodate existing and projected year 2040 travel demands. Within the project study area, existing Illinois Route 62 has a two-lane rural cross section. Illinois Route 62 widens to a four-lane cross section with exclusive turn lanes at the intersections on the east and west project limits. The proposed scope of work will be determined through the evaluation of identified transportation issues and the public involvement process.



EXISTING CONDITIONS

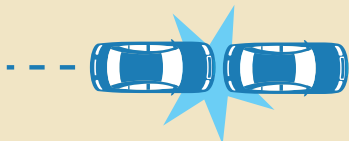
CRASH DATA

Crash reports have been acquired and the following data compiled:

- The number of crashes within the project area
- Conditions at the time of the crash
- Types of crashes
- Severity of the injuries

Within the project study area, there were 687 crashes between 2010 and 2015. the predominant crash type was rear end crashes (45.6%), which is indicative of congestion. Of the 687 crashes, there were 118 injuries reported.

The crash data collected will be used to determine potential safety improvements to the project study area.



TRAFFIC DATA

Existing traffic data has been acquired for Illinois Route 62 and the roadways within the project study area. The average daily traffic (ADT) along Illinois Route 62 ranges from 35,000 vehicles per day west of Illinois Route 25 to 39,000 vehicles per day east of Illinois Route 68. Between the intersections, along the project study area, the ADT for Illinois Route 62 is approximately 28,300 vehicles per day.

From the existing 2017 traffic data received, traffic volumes have been projected to year 2040. This data will allow the project study team to determine potential operational improvements to the project study area.

PROJECT DEVELOPMENT

IDOT develops roadway projects in three (3) distinct phases:

- Phase I: Preliminary Engineering & Environmental Studies
- Phase II: Contract Plan Preparation & Land Acquisition
- Phase III: Construction

- Public Meeting
- CAG Meeting
- Public Hearing
- Coordination with Regulatory Agencies

PHASE I PROCESS



The Illinois Route 62 Study is currently at the first public meeting, as part of the Data Collection phase of the project. During this time, IDOT is gathering information related to the project study area in order to develop solutions to address the identified transportation issues. IDOT will identify a broad range of solutions, including studying a “No Build” option, to improve Illinois Route 62 between Illinois Route 25 and Illinois Route 68.

The environmental analysis will follow the National Environmental Policy Act (NEPA). NEPA is a federal law for federally funded projects, requiring the analysis of a range of alternatives against their affect to the environment. Environment for NEPA is not strictly the natural environment but also includes the human environment (cultural and social). The goal of NEPA is to ensure that those environments are factored in to the Preferred Alternative and are a part of the project decisions.

This project is anticipated to be processed as an Environmental Assessment (EA) to determine if the project will result in significant impacts.



CONTEXT SENSITIVE SOLUTIONS (CSS)

This study will be in accordance with Context Sensitive Solutions (CSS). CSS is an interdisciplinary approach that seeks effective, multi-modal transportation solutions by working with stakeholders to develop, build, and maintain cost-effective transportation facilities that fit into and reflect the project’s surroundings—it’s “context.” The CSS approach will provide stakeholders with tools and information they require to effectively participate in the study process including providing an understanding of transportation planning guidelines, design guidelines, and the relationship between transportation issues (needs) and project improvements.